



## Site Specific Risk Assessment: Scrabster Harbour

	Name/Signature	Designation	Date
Assessment Carried Out By <sup>1</sup> :	Ken Nicol	Secretary / L5 Coach	3 April 2025
Reviewed By:	Emily Kearn	Safety Officer	4 April 2025

The review date for this assessment is **30 April 2028**

### Introduction

This is a **Specific Location risk Assessment** for Club paddling activities based from Scrabster Harbour.

### Risk Assessment

The Key injuries to individuals are:

- Personal Injury
- Downing
- Infection
- **Equipment Damage**

Hazards	People who are at risk	Risk	Control Measure(s)
<b>Harbour Operations</b> Including moving vehicles; lifting operations	All Canoe Club participants	Personal Injury	<ul style="list-style-type: none"> <li>■ On land activities are restricted to Scrabster beach; the areas adjacent to the Pentland Firth Yacht Club</li> </ul>

<sup>1</sup> In preparing the risk assessment, the Club Board, Coaches and Leaders were consulted.



## Site Specific Risk Assessment: Scrabster Harbour

Hazards	People who are at risk	Risk	Control Measure(s)
			<ul style="list-style-type: none"> <li>or using official car parks and footpaths</li> <li>■ Club members are not to access the quaysides during Club activities</li> </ul>
<p><b>Vertical Drops</b></p> <p>Falls into water or onto land</p>	<p>All Canoe Club participants</p>	<p>Personal Injury</p> <p>Drowning</p>	<ul style="list-style-type: none"> <li>■ Club members are not to access the quaysides during Club activities</li> </ul>
<p><b>Uneven Ground</b></p> <p>Creating slip and trip hazards</p>	<p>All Canoe Club participants</p>	<p>Personal Injury</p> <p>Equipment Damage</p>	<ul style="list-style-type: none"> <li>■ Where possible use established footpaths</li> <li>■ Appropriate footwear to be worn</li> <li>■ Encourage safe lifting and carrying practices of kayaks</li> </ul>
<p><b>Water</b></p>	<p>All Canoe Club participants</p>	<p>Drowning</p>	<ul style="list-style-type: none"> <li>■ Swimming will only be permitted when under direct supervision.</li> <li>■ No canoe club land based activities to take place around the main quays of Scrabster Harbour</li> <li>■ Paddling is only from the Scrabster beach area or</li> </ul>



## Site Specific Risk Assessment: Scrabster Harbour

Hazards	People who are at risk	Risk	Control Measure(s)
			<p>the slipway adjacent to the Pentland Firth Yacht Club</p> <ul style="list-style-type: none"> <li>■ A personal flotation device is to be worn during paddlesport activities</li> </ul>
<p><b>Water Quality (contamination).</b></p> <p>Sewage, hydrocarbons,</p>	<p>All Canoe Club participants</p>	<p>Infection</p>	<ul style="list-style-type: none"> <li>■ No paddling in the Harbour Basin</li> <li>■ Prevention measures against water borne infection are:-               <ul style="list-style-type: none"> <li>○ Cover all cuts and abrasions with waterproof plasters</li> <li>○ Always wear footwear to avoid cutting the feet</li> <li>○ Avoid capsize or rolling practice in suspected water.</li> <li>○ Where possible shower soon after the activity</li> <li>○ As a minimum always wash your hands after paddling and</li> </ul> </li> </ul>



## Site Specific Risk Assessment: Scrabster Harbour

Hazards	People who are at risk	Risk	Control Measure(s)
			<p style="text-align: right;">before eating or drinking.</p> <ul style="list-style-type: none"> <li>■ If within 3–19 days after paddlesport a participant feels ill with a temperature, influenza-like illness and/or joint and muscle pain and possibly jaundice, they should see their doctor immediately and inform the doctor that they have been taking part in water sports and where they have been paddling and mention that Weils Disease / Leptospirosis is suspected.</li> </ul>
<p><b>Vehicles</b></p> <p>Vehicle Collisions, impact injury to pedestrians.</p>	<p>All Canoe Club participants</p> <p>Members of the Public</p> <p>Other Harbour users</p>	<p>Personal Injury</p>	<ul style="list-style-type: none"> <li>■ Where possible use established footpaths</li> <li>■ Park in recognised car parks</li> <li>■ Scrabster Harbour Speed Limits to be observed</li> </ul>



## Site Specific Risk Assessment: Scrabster Harbour

Hazards	People who are at risk	Risk	Control Measure(s)
			<ul style="list-style-type: none"> <li>■ Club participants to go directly to activity meeting location</li> </ul>
<p><b>Shipping (Commercial &amp; Pleasure)</b></p> <p>Collisions, interference with activities harbour activities</p>	<p>All Canoe Club participants</p> <p>Other water Users</p>	<p>Personal Injury</p> <p>Downing</p> <p style="color: red;">Equipment</p> <p style="color: red;">Damage</p>	<ul style="list-style-type: none"> <li>■ When in the Scrabster seaward harbour limit (see <a href="#">Appendix 1</a>), a member of the group is to monitor Channel 12 for harbour marine traffic information</li> <li>■ No paddling in the Berth/Quay area of the harbour (<a href="#">see Appendix 2</a>)</li> <li>■ Avoid paddling in the main approaches to the harbour berth (<a href="#">see Appendix 3</a>).</li> <li>■ The main approaches to the harbour berth (<a href="#">see Appendix 3</a>) is to be treated as a shipping channel (no coaching; rescue practice in this area).</li> <li>■ Should it be necessary to paddle across the main approaches to the harbour, the Harbour</li> </ul>



## Site Specific Risk Assessment: Scrabster Harbour

Hazards	People who are at risk	Risk	Control Measure(s)
			<p>Master is to be contacted (see <a href="#">Appendix 3</a>) for permission</p> <ul style="list-style-type: none"> <li>■ When paddling out of Scrabster beach head, the main approaches to the harbour berth should be avoided (see <a href="#">Appendix 3</a>).</li> <li>■ Paddling activity should avoid, where possible, PFYC evenings.</li> <li>■ Paddlers are to keep clear of the Queen Elizabeth Berth during departure and arrival times of the Scrabster/Stromness ferry – Trip leaders to be aware of times</li> <li>■ Beginners/novices not to be taken into the main approaches to the harbour berths (see <a href="#">Appendix 3</a>)</li> </ul>
<p><b>Vermin</b>  Rats, Mice</p>	<p>All Canoe Club Participants</p>	<p>Infection <b>Equipment Damage</b></p>	<ul style="list-style-type: none"> <li>■ All rubbish is to be either taken home or disposed of designated bins</li> </ul>



## Site Specific Risk Assessment: Scrabster Harbour

Hazards	People who are at risk	Risk	Control Measure(s)
	Members of the Public Other harbour users		<ul style="list-style-type: none"> <li>■ Evidence of vermin to be reported to the Scrabster Harbour Trust</li> <li>■ General prevention measures against infection are:-               <ul style="list-style-type: none"> <li>○ Cover all cuts and abrasions with waterproof plasters</li> <li>○ Always wear footwear to avoid cutting the feet</li> <li>○ Avoid capsize or rolling practice in suspected poor water quality.</li> <li>○ Where possible shower soon after the activity</li> <li>○ As a minimum always wash your hands after paddling and before eating or drinking.</li> </ul> </li> </ul>



## Site Specific Risk Assessment: Scrabster Harbour

Hazards	People who are at risk	Risk	Control Measure(s)
			<ul style="list-style-type: none"> <li>■ If within 3–19 days after paddlesport a participant feels ill with a temperature, influenza-like illness and/or joint and muscle pain and possibly jaundice, they should see their doctor immediately and inform the doctor that they have been taking part in water sports and where they have been paddling and mention that Weils Disease / Leptospirosis is suspected.</li> </ul>
<b>Weather</b>  Wind, Sun, Temperature	All Canoe Club Participants	Personal Injury  Drowning	<ul style="list-style-type: none"> <li>■ Obtain weather forecast prior to event</li> <li>■ Alter activities if weather conditions pose a significant threat to the continued safety of the group.</li> <li>■ Ensure suitable clothing/equipment is worn by participants</li> </ul>



## Site Specific Risk Assessment: Scrabster Harbour

Hazards	People who are at risk	Risk	Control Measure(s)
			<ul style="list-style-type: none"> <li>■ Set targets suitable for the ability of the group.</li> </ul>
<p><b>Wildlife</b></p> <p>Danger from attack/injury</p>	<p>All Canoe Club Participants</p>	<p>Personal Injury</p>	<ul style="list-style-type: none"> <li>■ Respect local wildlife habitats.</li> <li>■ Adhere to the <b>Paddle Scotland's</b> Sea Paddling Guide to Good Practice with the overarching principle to minimise any disturbance that you might cause to the animals / habitats</li> <li>■ Pass wildlife slowly and quietly allowing plenty of space.</li> <li>■ Avoid rescue practice were there are blooms of jellyfish</li> </ul>
<p><b>Fishing Activities (Commercial and Pleasure)</b></p> <p>Entanglement and entrapment</p>	<p>All Canoe Club Participants</p>	<p>Personal Injury Downing</p>	<ul style="list-style-type: none"> <li>■ Avoid paddling near <b>anglers</b></li> <li>■ Avoid capsized / rescue practice near buoys, fishing nets/lines</li> </ul>



## Site Specific Risk Assessment: Scrabster Harbour

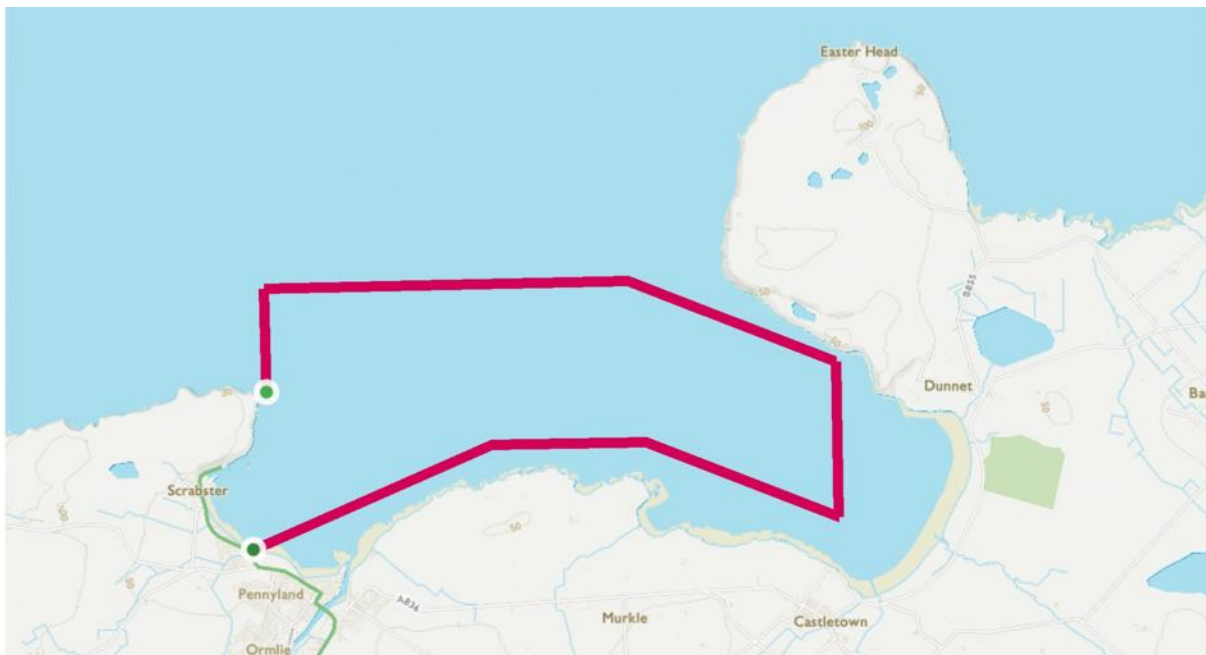
Hazards	People who are at risk	Risk	Control Measure(s)
<b>Chemicals</b> (eg cleaning materials, rat poison, lubricants)	All Canoe Club Participants Members of the Public	Personal Injury Equipment Damage	<ul style="list-style-type: none"> <li>■ Follow manufactures instruction for storage, use and first aid interventions</li> </ul>



## Site Specific Risk Assessment: Scrabster Harbour

### APPENDIX 1

Boundary of the Scrabster Harbour Limit



- Definition of the seaward harbour limit from a point on the shore at Holborn Head at grid reference (ND 10949 71559) in a straight line due north to (ND 10949 73168), then in a straight line due east to (ND 16617 73168) then in a straight line approximately east south east to (ND 19813 71844) then in a straight line due south to (ND 19813 69431) then in a straight line approximately west north west to (ND 16840 70662), then in a straight line due west to (ND 14423 70662), then in a straight line approximately west south west to the old Coastguard Station Scrabster at (ND 10700. 69120).



## Site Specific Risk Assessment: Scrabster Harbour

### APPENDIX 2

#### Prohibited Area for Club Paddlesport Activities

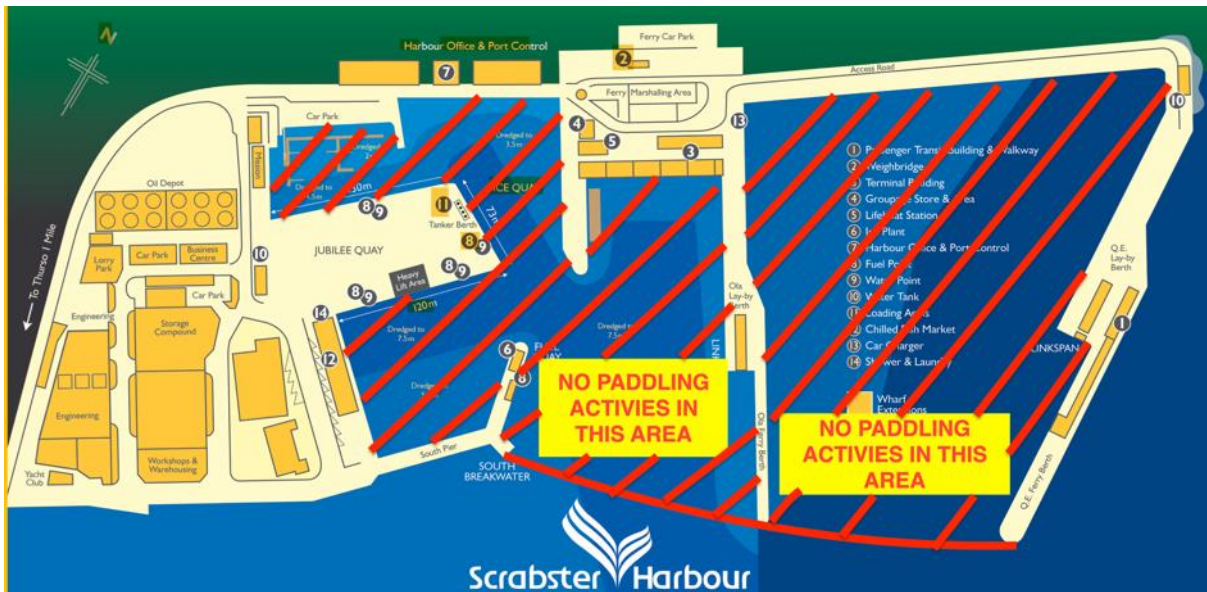


Figure 1: Prohibited Paddlesport Area at Scrabster Harbour



## Site Specific Risk Assessment: Scrabster Harbour

### APPENDIX 3

Main harbour approach area & preferred route for kayaks



Yellow circle: indicates main approaches to the harbour berths

Yellow arrow: indicates preferred course for kayaks to take when departing/arriving from Scrabster Beach